



NAPILI KAI
BEACH RESORT

2018 | RATES & INFORMATION



RESORT AMMENITIES

Resort Services & Activities

No Resort Fees. Keiki (Children) Eat Free Program (seasonal with age restrictions). No Parking Fees. Children stay free up to maximum occupancy in room. Our rates include: Mid-morning refreshments at the Beach Cabana with Hawaiian cultural presentations. Adult Putting Party on our 18-hole putting green with 50¢ cocktails each Monday. Mai Tai Party hosted each Wednesday by the Staff. Weekly flower lei making, horticultural tour. Weekly Keiki Hula Show and Weekly Slack Key Concert (fee). Self-serve coffee and tea in the Lobby each morning and afternoon. Complimentary use of beach towels, beach chairs, checkerboard, shuffleboard, picnic coolers, bocce ball and golf putters. Several swimming pools. Large heated adult whirlpool and one family whirlpool. Barbecue areas. Complimentary WiFi in your room. Complimentary boarding pass printing in lobby.



Keiki (Children's) Activities

Mid-June to mid-August, Thanksgiving, and Christmas for children ages 6-10. Complimentary to in-house guests. A 24-hour advance registration is required. Space is limited.

Sea House Restaurant

Breakfast, lunch, pupus, dinner and cocktails are served. Hawaiian music. Private dining available at Na Hoku Point for 2-12 people. Wedding reception and other banquet services for up to 26 people in the Sea House, 27-60 people on the Lani Terrace, and 60-200 people at the Aloha Pavilion. Contact catering@napilikai.com or 808-669-1500.



MILEAGE CHART

From Napili Kai Beach Resort:	
West Maui Airport	3 Mi
Kaanapali	5 Mi
Lahaina	9 Mi
Maalaea	27 Mi
Wailuku	30 Mi
Kihei	33 Mi
Kahului Airport	36 Mi
Haleakala	63 Mi
Hana	80 Mi



Makai Hale

Complimentary sports and beach equipment. Snacks, coffee, milkshakes and smoothies. In-house guest room charge only.

Fitness Center

Air-conditioned fitness center with a variety of workout equipment. Open 24 hours, 7 days a week.

Meeting Facilities

Meeting, seminar and retreat facilities are available in the Pili Aloha room for up to 45 participants and at the outdoor Aloha Pavilion for 60-200 participants. Contact: sales@napilikai.com.

Wedding Ceremony

Wedding ceremony locations are available on property for parties of 2-200 people. Contact: yourwedding@napilikai.com for details.

Activities & Concierge Desk

Assists in booking Maui's best sightseeing tours, fishing charters, dinner cruises, luaus, helicopter rides, zipline, Eco hikes and more! Call toll free 1-877-669-0572 for advance bookings.

Makai Massage & Bodywork

Pamper yourself with a massage, facial, or body treatment at our boutique day spa. Moonlight massage also available. Call 808-669-2000 for appointments.

Breezeway Boutique

Delightful boutique on the premises. Lovely Hawaiian gifts, clothing, and estate jewelry. Call 808-669-6703.

Tennis

Courts adjacent to resort with pro on duty at Kapalua (fee). Call 808-662-7730.

Golf

Two championship Kapalua Golf Courses are located adjacent to Napili Kai Beach Resort. For details on special rates call 808-669-8044. Kaanapali championship courses are 5 miles south (fee).

INFORMATION

General

All rates subject to change without notice. Check-in time: 3:00pm. Check-out time: 12 Noon. Specific building, location, floor, room number, or A/C are not guaranteed. A premium of \$350 for a hotel room or studio, or \$450 for a suite will guarantee specific building, location, A/C, floor, or room number of each unit. This premium is payable in advance, is non-commissionable, non-refundable, non-transferable, and will not be applied as a deposit against the daily room rate. Payment is due upon booking. Without the premium, the specific building, location, floor, A/C, or room number will be a preference only, not guaranteed and based on availability at check-in. ADA Rooms available.

FOR RESERVATIONS

Contact our Reservations Department on Maui, or visit our website to book online or call your Travel Agent. View our webcam: www.napilikai.com

TOLL FREE USA and CANADA
800-367-5030

6:30am-4:30pm Hawaii Time, M-F
7:00am-2:00pm Hawaii Time, Sat-Sun

Reservations Fax: 808-669-0086
Email: stay@napilikai.com

5900 Lower Honoapiilani Road
Lahaina, Hawaii 96761

All other calls: 808-669-6271
All other faxes: 808-669-5740

GPS Guide
Long. 156.66544 Lat. 20.99713



Some units are privately owned in Puna Point, Puna 2, Lani 1, and Lani 2, and owners reserve the right to take their unit out of the rental pool for any given arrival date prior to 90 days of their departure date.

Premium payments for privately owned units accepted 90 days prior to departure date, based on availability.

Deposit, Revision, and Cancel Policy

A two-night deposit is required upon booking. A 14-day notice prior to arrival date is required for revisions and cancellations. Less than 14 days notice will be subject to forfeiture of two nights' deposit. Reservations for 4 weeks and longer require 7 nights' deposit and a 30-day cancellation/revision notice. Notice of less than 30 days will be subject to 7 night forfeiture of deposit. All reservations without deposit are subject to cancellation without notice. Family and group deposit policies for 4 or more units will differ.

CHRISTMAS POLICY: A minimum stay of 7 nights is required for any stay that includes December 14 through January 6. Shorter stays may be requested after September 1, space available. A 7-night deposit is due upon booking. All payments are non-refundable after September 1.

Methods of Payment

Travelers' cheques, personal checks with identification, cash, Visa, MasterCard and Discover accepted.

Guest of Guest Policy

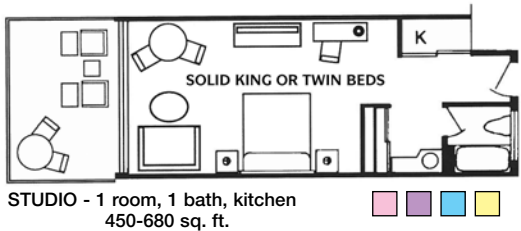
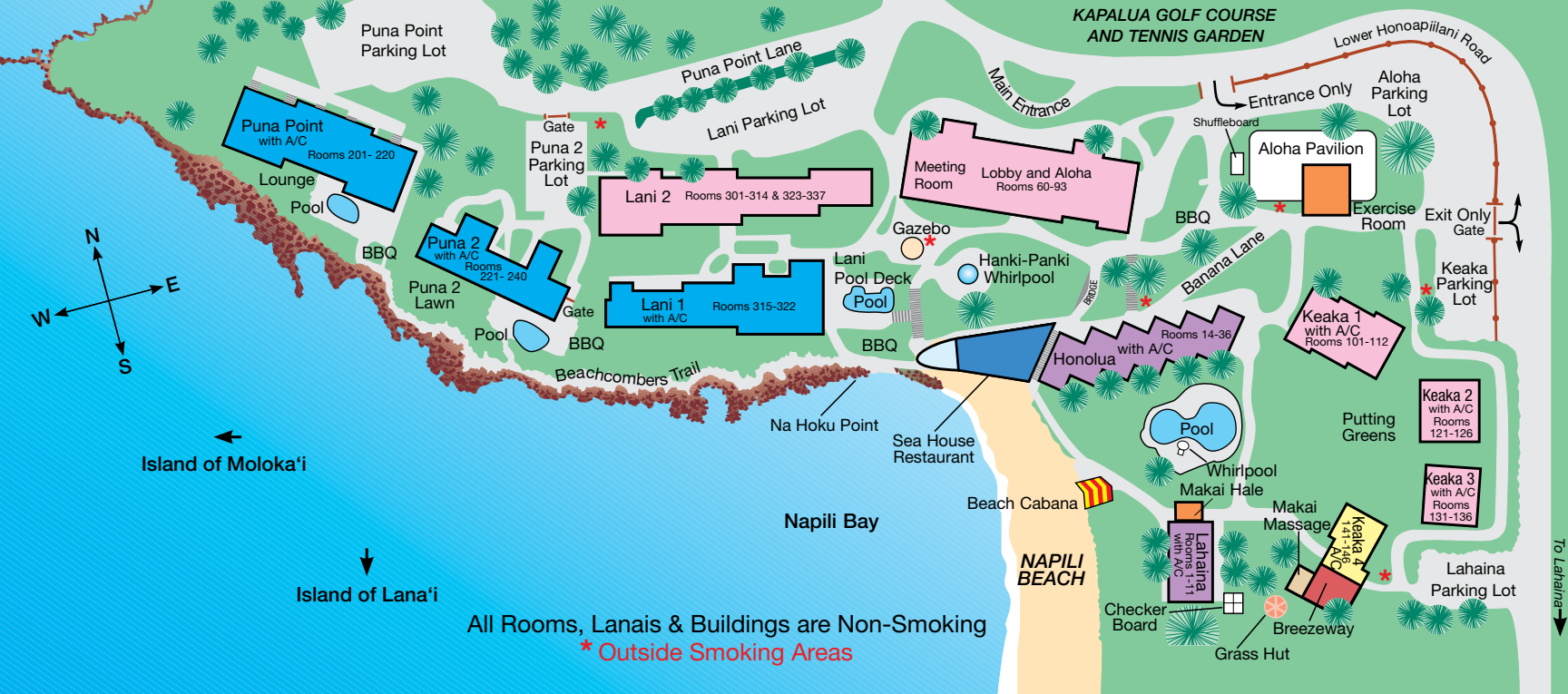
Pools and all Napili Kai Beach equipment, facilities and services, with the exception of the Sea House Restaurant, Makai Massage and Breezeway Boutique, are for the sole use of Napili Kai Beach Resort registered guests. Day passes for friends or family are not available. Please be aware that our Recreations and Security Staff is tasked with enforcing this policy to ensure our guests maintain and enjoy the exclusive privileges of the resort.

All policies are subject to change without notice.

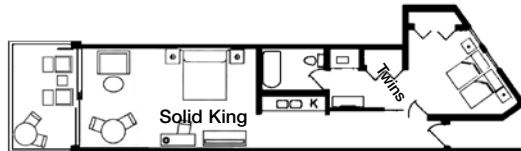
Airport Information & Transfer

Kahului Airport (OGG) is 36 miles from Napili Kai Beach Resort. Taxis are also available each way for approximately \$130-\$140. Shuttles are approximately \$80-\$85. Kapalua-West Maui Airport (JHM) is 5 minutes from Napili Kai Beach Resort and taxis are available, approximate cost is \$15, one way. Courtesy phones are at baggage claim for shuttle service.

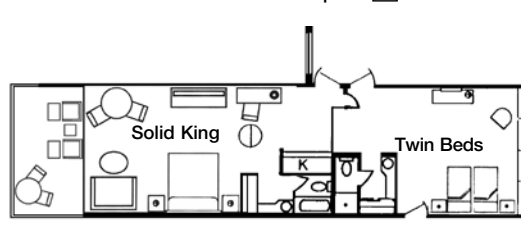




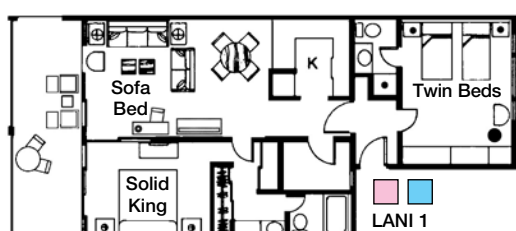
STUDIO - 1 room, 1 bath, kitchen 450-680 sq. ft.



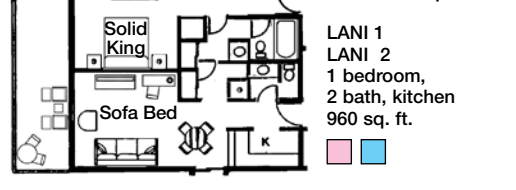
HONOLUA - 1 bedroom, 1 bath, kitchen LAHAINA similar 575-685 sq. ft.



ALOHA & PUNA 2 - 1 bedroom, 2 bath, kitchen 830-870 sq. ft.



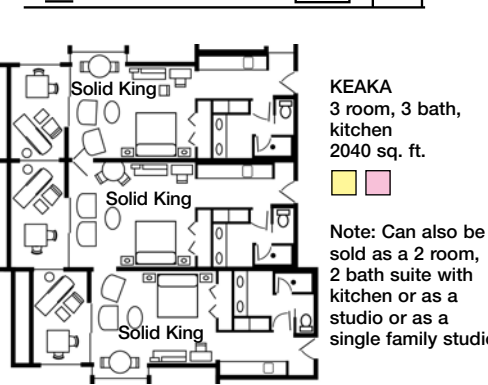
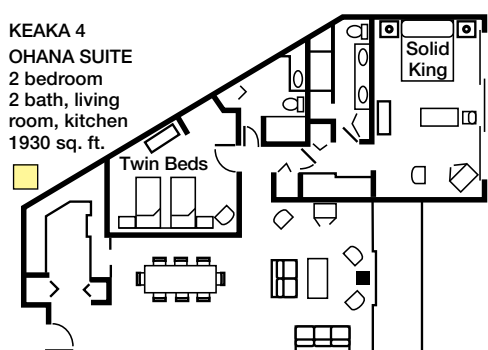
LANI 1 LANI 2 2 bedroom, 2 bath, kitchen 1560 sq. ft.



LANI 1 LANI 2 1 bedroom, 2 bath, kitchen 960 sq. ft.



PUNA POINT, 1 bedroom, 2 bath, kitchen 865 sq. ft.



KEAKA 3 room, 3 bath, kitchen 2040 sq. ft. Note: Can also be sold as a 2 room, 2 bath suite with kitchen or as a studio or as a single family studio

Note: Floor plans not to scale. Square footage includes lanai and is approximate.

ROOM AMENITIES

- Large Private Lanais with Ocean Views
- Deluxe Kitchenettes
- All Flat-Screen TVs
- Cable Music Channels
- DVD/CD Player
- Telephone & Voicemail
- Accommodations have Ceiling Fans some w/ Air Conditioning
- Washer/Dryer facilities with Complimentary Detergent on property
- Iron/Ironing Board
- Complimentary Portable Cribs
- Hair Dryers
- Free Parking
- In-room Safe
- Coffee & Coffee Maker
- ADA Accessible Rooms
- Daily Maid Service
- Full Fridge in Studios & Suites, Mini Fridge in Hotel Rooms
- WiFi in Lobby
- Internet Kiosk
- Complimentary WiFi in Rooms
- AM/FM Clock Radio
- Complimentary local phone calls

Smoking

All buildings, rooms and lanais are nonsmoking. Smoking areas are designated on the property map. Smoking is inclusive of E-Cigs & Vaping. Cigar and/or Pipe smoking is not permitted anywhere on the property.

ROOM RATES

Room Category	2017/18 Holiday 12/15/17 - 1/6/18	2018 Value Season 1/7/18 - 12/14/18	2018/19 Holiday 12/15/18 - 1/6/19
Garden View Keaka 4			
Hotel Room.....	\$399	\$335	\$435
Family Studio	\$488	\$400	\$500
2 Room Keaka Suite - 2 Hotels	\$798	\$670	\$870
2 Room Keaka Suite - 1 Studio & 1 Hotel	\$888	\$735	\$935
2 Room Keaka Suite - 2 Studios	\$977	\$800	\$1,000
3 Room Keaka Suite - 2 Hotels & 1 Studio	\$1,286	\$1,070	\$1,370
3 Room Keaka 4 Suite - 1 Hotel & 2 Studios	\$1,376	\$1,135	\$1,435
Garden-View Ohana Suite	\$1,286	\$1,050	\$1,350
Ocean View: Aloha, Lanai 2, Keaka 1, 2, 3			
Hotel Room.....	\$493	\$425	\$525
Studio.....	\$536	\$445	\$545
Family Studio	\$560	\$475	\$575
1-Bedroom Suite	\$839	\$675	\$875
2-Bedroom Suite	\$1,215	\$955	\$1,255
2-Room Keaka Suite - 1 Studio & 1 Hotel	\$1,053	\$900	\$1,100
2-Room Keaka Suite - 2 Studios	\$1,120	\$950	\$1,150
3-Room Keaka Suite - 2 Studios & 1 Hotel	\$1,613	\$1,375	\$1,675
3-Room Keaka Suite - 3 Studios	\$1,680	\$1,425	\$1,725
Beach Front: Lahaina, Honolua			
Studio.....	\$571	\$495	\$595
1-Bedroom Suite	\$881	\$725	\$925
Ocean Front: Puna Point, Puna 2, Lanai 1			
Studio.....	\$679	\$595	\$695
1-Bedroom Suite Lanai 1/Puna Pt/Puna 2.....	\$953	\$780	\$995
2-Bedroom Suite Lanai 1.....	\$1,417	\$1,250	\$1,550

Puna Point, Puna 2, Honolua and Keaka have A/C. All rates subject to 4.166% general excise tax plus 9.25% hotel room tax. All rates subject to change without notice.



SPECIALS

Kids Eat Free
For Napili Kai Beach Resort registered guests. A child 10 years or younger may eat free from the Keiki Menu in the Sea House when accompanied by an adult who purchases as adult entrée (a 1 to 1 ratio) at breakfast, lunch and dinner (happy hour excluded). Blackout dates are December 16 through January 6 and on resort defined holidays. Sea House Restaurant 808.669.1500.

Call Reservations at 800.367.5030 for specials and packages.

Small Groups, Family Reunions, Wedding Parties, Good Friends, and Celebrations
Book 5-9 accommodations for 5 nights minimum each and receive: Guarantee of Specific Unit based on availability at the time of booking, Complimentary Photo Session, Napili Kai Special Amenity, and Orchid in each unit. Holiday Season excluded. Discounted rates, packages and specials excluded. Group agreement and final prepayment required 45 days prior to arrival.



ACCOMMODATION DESCRIPTIONS

Hotel Room
One large room with bath and private lanai. Includes small refrigerator, microwave and coffee maker. Accommodates 1-3 people. Solid king or two twin beds and 2 cot-sized sofa beds. Portable crib available upon request. Air conditioned.

Studio
One large room with fully equipped kitchenette, bath, and private lanai. Accommodates 1-3 people. Solid king or two twin beds and twin sofa bed. Portable crib available upon request. Some with A/C.

Keaka Family Studio
One large room with fully equipped kitchen, one large bath and large private lanai. Solid king or two twin beds with queen sofa bed or 2 cot-sized sofa beds. Accommodates family of up to 4 people with children 10 years and younger. Not suitable for 2 adult couples or families of 4 with children older than 10 years. Portable crib available upon request. Air conditioned.

1-Bedroom Suite
Sleeping accommodations in both rooms, 1 or 2 baths, fully equipped kitchenette, and private lanai Accommodates 2 to 4 people (some accommodate 5 people). Either solid king and two twin beds, or solid king and queen sofa bed. Portable crib available upon request. Some with A/C.

2-Bedroom Suite
Two bedrooms with sleeping accommodations also in living room, two baths, fully equipped kitchen, and private lanai. Accommodates 4-7 people. Solid king, two twin beds, and queen sofa bed. Portable crib available upon request. Some with A/C.

Keaka 2- and 3-Room Suites
Two or three side-by-side hotel rooms or family studios with interior connecting doors and exterior connecting lanais. Three people maximum per hotel room or 4 per family (with children 10 years or younger) studio with solid king or two twin beds and queen sofa bed or 2 cot-sized sofa beds. Portable crib available upon request. (Booked as one accommodation.) Air conditioned.

